

SRI SATHYA SAI COLLEGE FOR WOMEN, BHOPAL

Attainment of Course Outcomes

The outcomes of a course organized by the institution determine what learners will know or be able to do as a consequence of an educational activity. The outcomes usually relate to knowledge, skills and attitudes. It is a measurable, visible and meaningful indicator of what the student must know and be able to do as a result of learning. This data indicates what students are expected to know and be capable of doing when the program is over. The entries shall conform to the basic attributes of graduation specified in the NBA.

The major components of Outcome Based Education (OBE) are Course Outcome (CO) and Program Outcome (PO). Based on how well these two parts are defined and evaluated, OBE attainment is measured.

Outcome Based Education (OBE)

- **Course Outcomes (COs)** are statements that specify what a learner will know or be able to do as a result of a learning activity. Outcomes are usually expressed as knowledge, skills, or attitudes. It is a measurable, observable, and specific statement that clearly indicates what a student should know and be able to do as a result of learning. It describes what students are able to demonstrate in terms of knowledge, skills and values upon completion of a course/a span of several courses.
- **Program Outcomes (POs)** describe what a program is expected to accomplish. POs describe what students should know and be able to do at the end of the programme.
- **Program Specific Outcomes (PSOs)** describe what the Postgraduates/graduates of a specific program should be able to do. Clear articulation of course outcomes, POs, and PSOs serves as the foundation for evaluating the effectiveness of the teaching and learning process.

ASSESSMENT OF COS, POS AND PSOS

The assessment takes place at following levels:

a) The Course-level Assessment - The CO attainment levels are measured based on the results of the cumulative internal examinations and semester/yearly end examination conducted by the Institution.

b) The Programme level assessment- Assessment of Programme Learning Outcomes and programme specific outcome through direct and indirect methods of assessment methodology/tools like comprehensive examination, rubrics, and surveys etc., are decided keeping in mind the parameters/learning outcomes to be measured and the desired emphasis during the delivery of a programme as prescribed in the course curriculum

The matrix can be used for any course and is a good way to evaluate a course syllabus/content/structure.

(A). Assessment of Course Level Assessment-

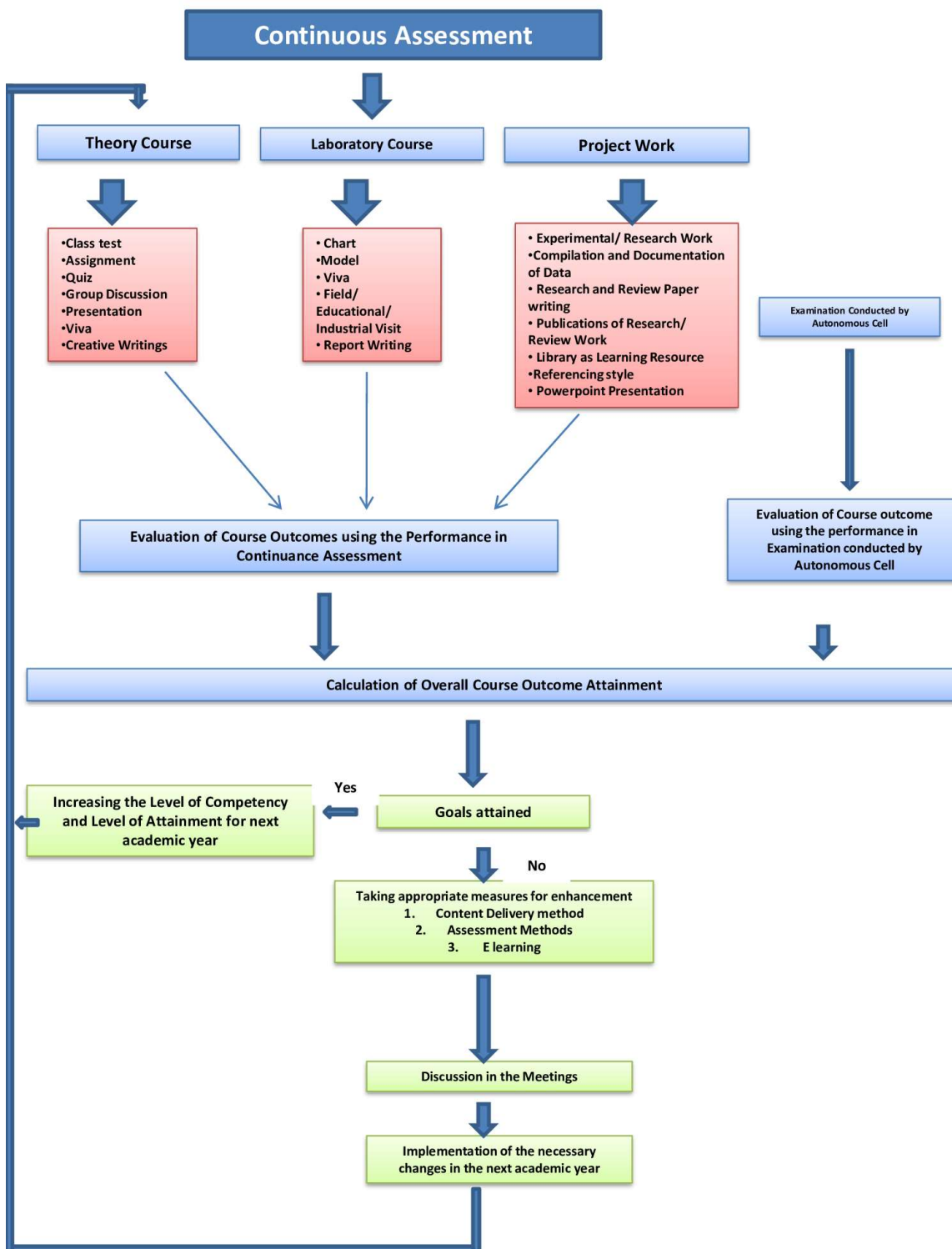
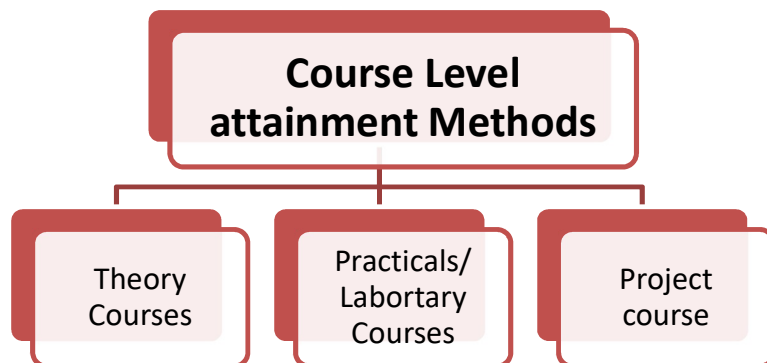


Figure 1. Process for CO Attainment



➤ **Theory courses:** For each theory course, faculty member calculates the course outcome attainment using College Examination and Internal Assessment Test. The attainment level will be calculated based on the average performance levels of both Internal Assessment test (CCE) and Final Examination. The evaluation process of Internal Assessment Tests/Assignments/Tutorials/Group Discussion is counted for 30% and the remaining 70% will be given for autonomous examination.

| Assessment Tool | Weightage | Frequency |
|--|-----------|---|
| 1. UG Internal Assessment Test (CCE) <ul style="list-style-type: none"> • Best 3 CCE out of 4 CCE | 30% | Three Assessment in One year |
| 2. PG One internal Assessment | | One Assessment in a semester |
| 3. B.Ed. Institution Examination | 70% | 1. Once in a year for UG Course 2. Twice in a year in PG and B.Ed. |

➤ **Laboratory Courses:** For laboratory courses, the course outcome will be calculated based on performance, viva-voce, record work and model practical examination with the weightage of 30% for Continuous Internal Assessment and 70 % weightage for Practical Examination. Based on the CO attainment level, the faculty member will decide whether to increase the competency level or enhance the practical knowledge of the students in order to improve attainment level for the laboratory course.

| Assessment Tool | Weightage | Frequency |
|-----------------|-----------|-----------|
| | | |

| | | |
|-----------------------------------|-----|---|
| Continuous Assessment Test | 30% | 1. Once in a year for UG Course 2. Twice in a year in PG and B.Ed. |
| Institution Practical Examination | 70% | 3. Once in a year for UG Course 4. Twice in a year in PG and B.Ed. |

- **Project Work Assessment:** For project work, Continuous Internal Assessment is based on the performance in the three reviews.

The Course Attainment is calculated based on the three reviews and project Viva voce. Project review is conducted every month to review the progress of the project and the second review will be conducted in the presence of an subject expert in the form of Viva.

| Assessment Tool | Weightage |
|--------------------------|-----------|
| Continuous Assessment | 30% |
| Institutional Assessment | 70% |

COURSE ATTAINMENT LEVELS

1

- Students attained score in internal and end semester examination in between 60% to 69%.

2

- Students attained score in internal and end semester examination in between 70% to 79%.

3

- Students attained score in internal and end semester examination is are greater than or equal to 80%.

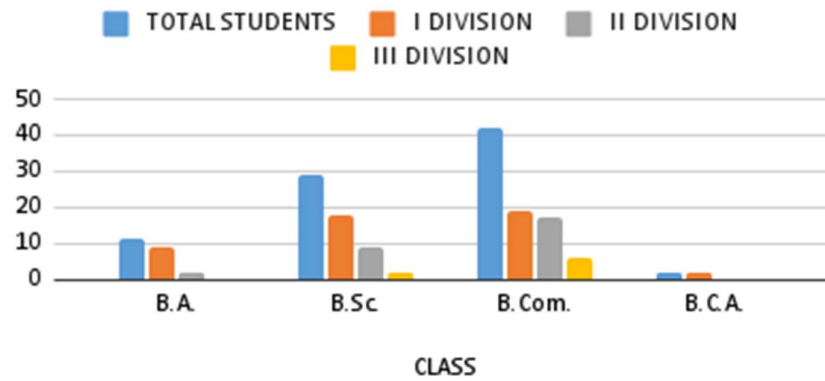
Assessment Process for CO Attainment:

Course Outcome is evaluated based on the performance of students in Final EXAMINATION of a course.

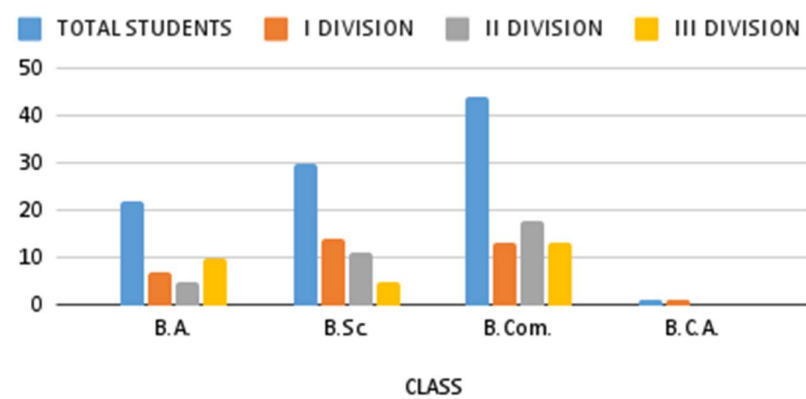
Data sheet related to the Results of 2021-22 is-

<https://docs.google.com/spreadsheets/d/1wF1MJc7hrwHge8XMqPpmAV3Ys2q-RTDi/edit?usp=sharing&oid=116293689676367975305&rtfpof=true&sd=true>

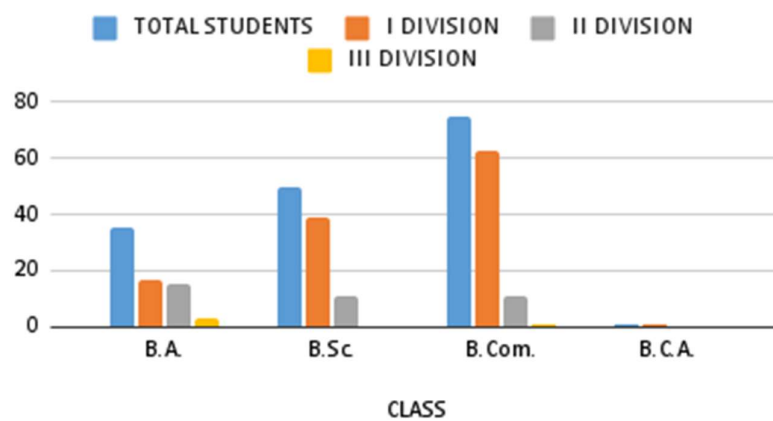
UG Ist Year 2021-22



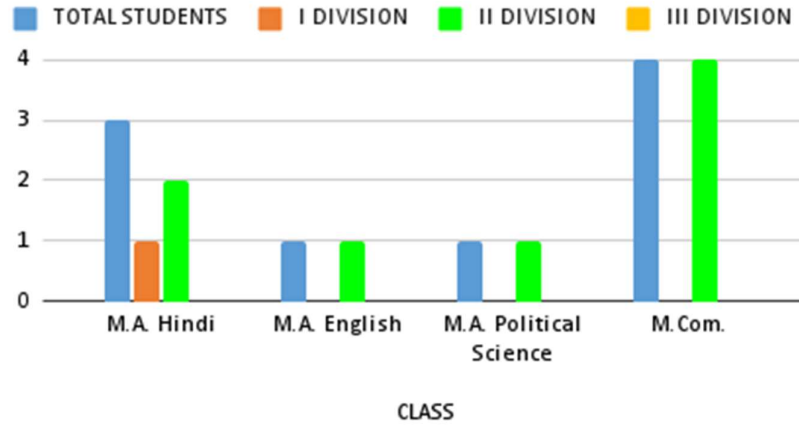
UG II YEAR 2021-22



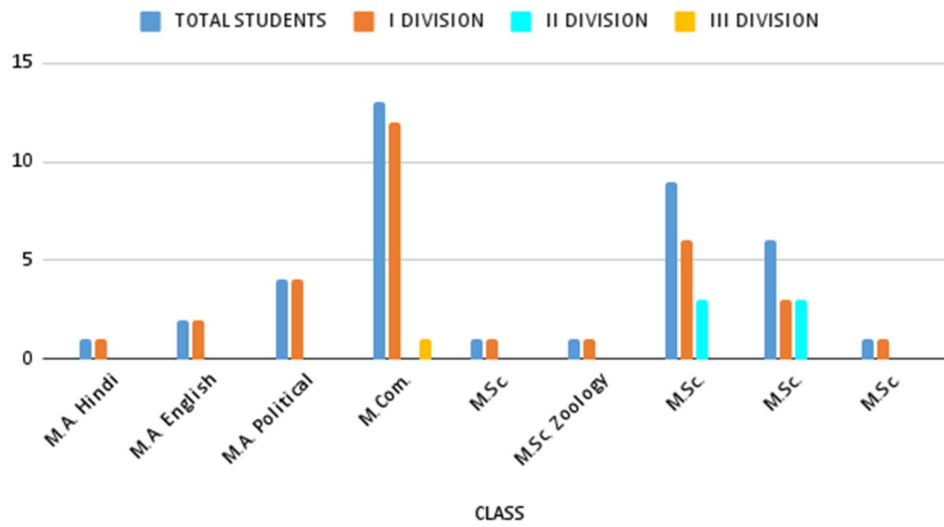
UG III YEAR 2021-22



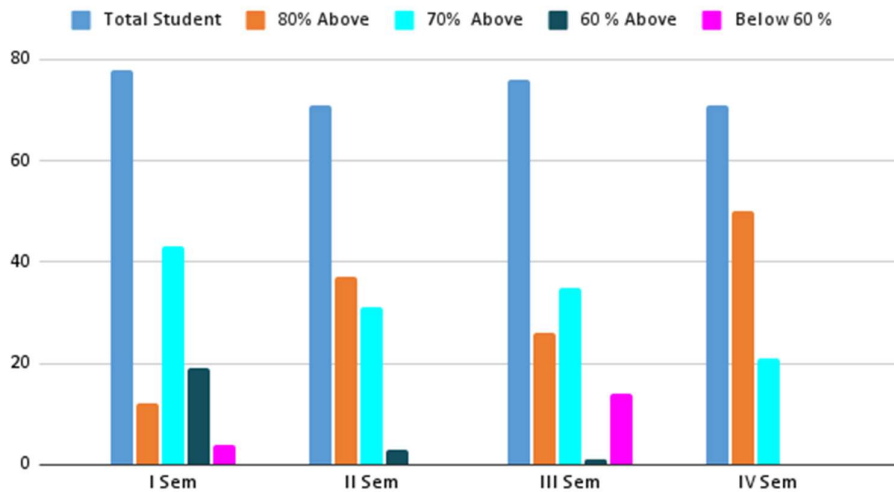
PG I YEAR 2021-22



PG II YEAR 2021-22



B.Ed. 2021-22



(A). Assessment of Program Level Assessment-

It is calculated by direct as well as indirect assessment of the course.

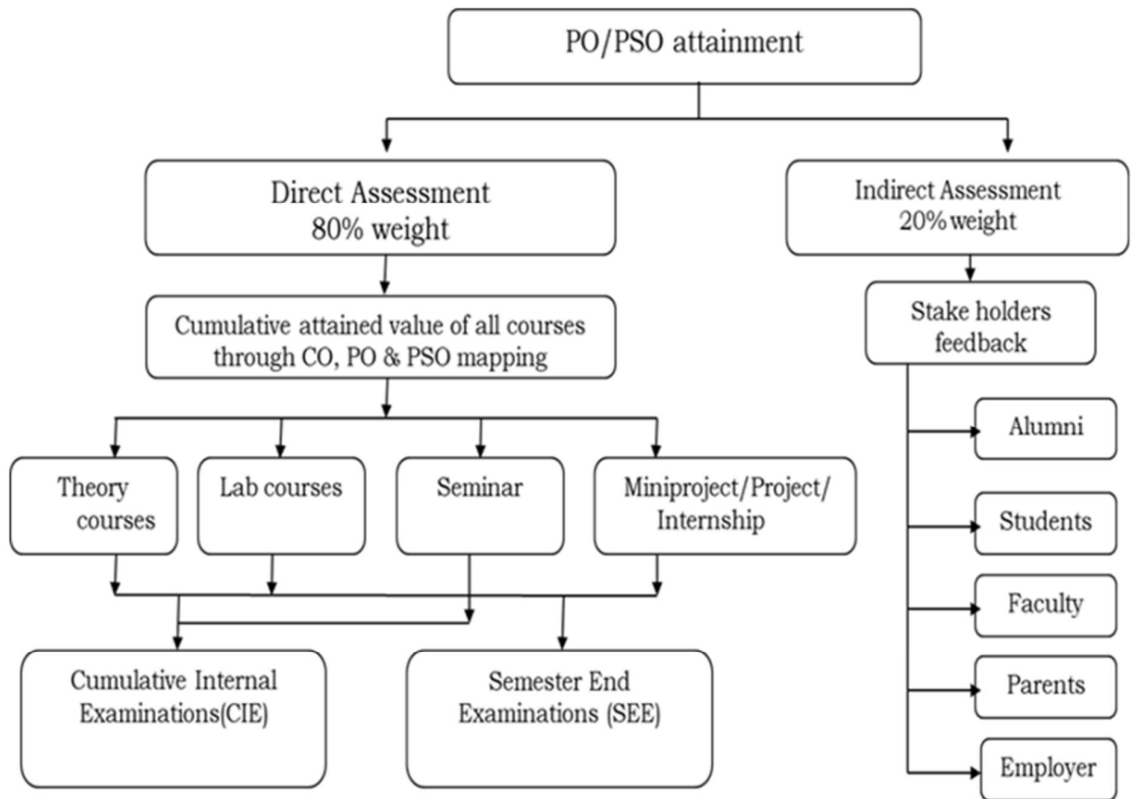


Figure: 2 PO – PSO Attainment Tools

Direct Assessment:

| Evaluation Methods | Process |
|---------------------------|---|
| Internal Assessment Tests | Three Internal Assessment Tests are conducted per semester to evaluate the attainment of course outcomes for UG students. One Internal Assessment Test is conducted for PG and B.Ed. Students in each semester. |
| Written Assignments | The tutorials and assignments are given to the students based on the subject nature. For four credit papers tutorials are mandatory. Tutorial and Assignment sheets are prepared by the faculty member with COs and levels. |
| Laboratory Course | The evaluation criteria for each experiment are based on performance, viva-voce and record mark. The attainment of COs is calculated through continuous assessment and model practical performance. |

| | |
|----------------------|--|
| Project Reviews | Reviews are conducted periodically to monitor and evaluate the progress of the project using project rubrics. Viva-Voce is conducted at the end of the semester as per Autonomous norms. |
| End term Examination | At the end of each semester, final examination is conducted for Theory and Laboratory courses by Autonomous cell. |

Indirect Assessment:

| Course outcome Attainment | Tools | Process |
|---------------------------|---|--|
| Indirect | <ul style="list-style-type: none"> • Program Exit Survey | On completion of course, a feedback is obtained from each student about the entire program experience. |
| | <ul style="list-style-type: none"> • Alumni Survey | During the alumni meet, graduation day the alumni survey are collected from the graduates based on the various parameters. |